

### ikan V8000HDMI 8" HD LCD Monitor

Retail: \$995

ikan releases the next generation, high definition monitor, the V8000HDMI. We've taken an already great monitor and improved its versatility with additional inputs and more power options. Just like the original, the V8000HDMI has 'pass through' inputs for composite, S-video and SD/HD component, but now it features the new HDMI input, enabling you to use an array of different devices. The rear of the monitor now features 100mm VESA mounting threads for a variety of mounting options.

The V8000HDMI still has built in battery support, but we've totally redesigned it to include a wide variety of options for both the prosumer and the professional alike. For those using prosumer batteries, you can still power the V8000HDMI with the Sony "L" series battery, but now you can use DV camera batteries from Canon, Panasonic and others with our new DV battery adapter plates.

For those using professional grade battery systems, ikan has developed an innovative mounting system. With our Pro Battery system, the battery is actually suspended separately from the monitor, transferring the weight of the battery system to the metal Invert Bracket and away from the monitor housing case. More inputs and a variety of portable power options and an incredibly reasonable price make the V8000HDMI one of the most versatile monitors in on the market today.

#### V8000HDMI Kit Includes:

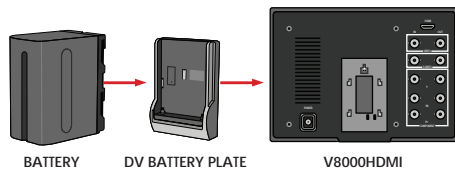
- V8000HDMI
- AC Power Adapter
- Camera Shoe Mount
- Your choice of one DV battery plate. (Sony, Panasonic, Canon, etc.)

#### Battery Power Options: (Sold Separately)

##### DV Battery Plates

- Sony Battery Plate (NPF970)..... \$29.95
- Canon Battery Plate (BP945).....\$29.95
- Panasonic Battery Plate (CGRD54).....\$29.95
- JVC Battery Plate (BNV438U) ..... \$29.95

\* Battery Not Included

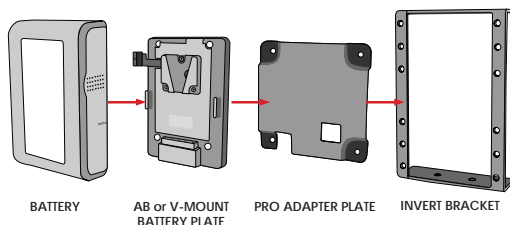


##### Pro Battery Plate Kits

- V-Mount Battery Plate Kit .....\$149.00
- Gold Mount Battery Plate Kit.....\$149.00

\* Battery Not Included

Kit includes: Battery Plate, Pro Adapter Plate, and Invert Bracket.



## HDMI



#### SPECIFICATIONS

Diagonal 8" TFT - LCD
Resolution: 800 x 480
Operating Volts: DC 11-14.4V
Dimension: 8"x 5.6"x 1.25"
Viewing angles: 65/65(R/L)
Weight (lbs) 1.15

#### Key Features:

**A variety of inputs including:**

- Composite, S-Video, SH/HD Component, and HDMI

**Built in battery support with various battery plates making it compatible with:**

- Sony, Canon, Panasonic, JVC, Gold mount, and V-Mount

**Additional features include:**

- 480i, 480p, 720p, and 1080i.
- A guide feature defining safe areas for both 16:9 and 4:3.
- Push button vertical and horizontal flip.

